

## HTS HMI

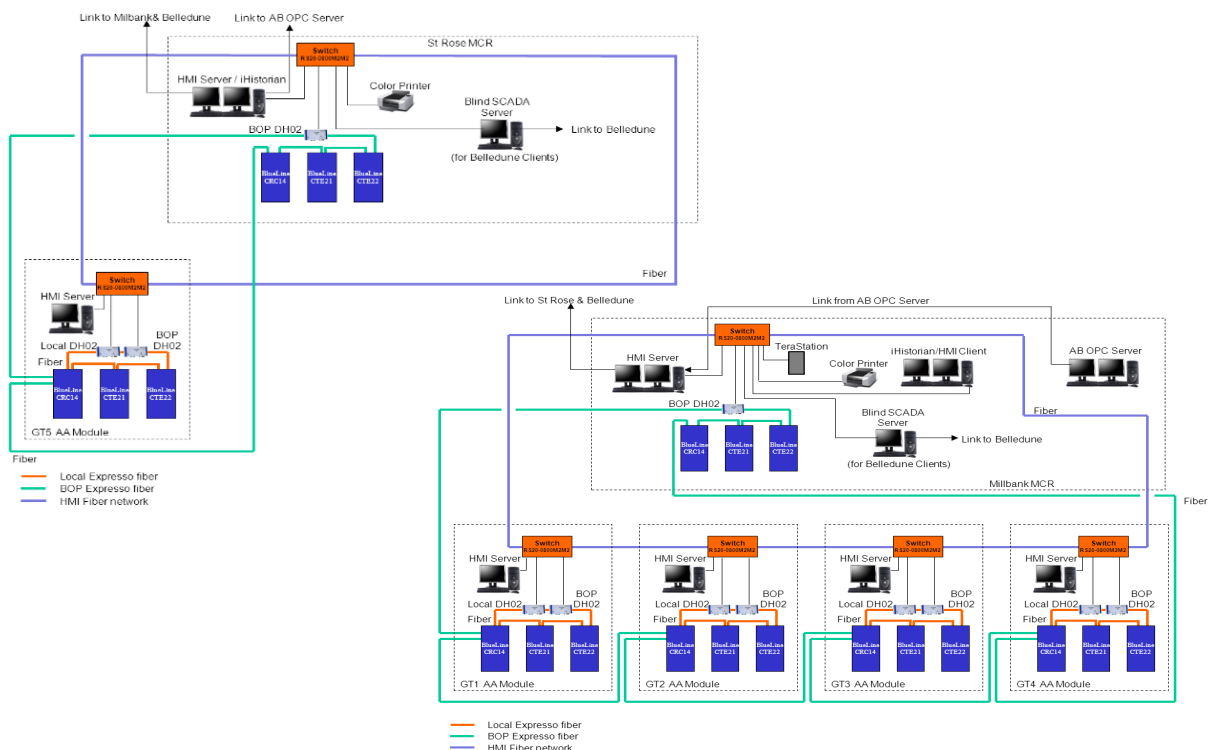
Based on GE Proficy iFix product

iFix Overview:

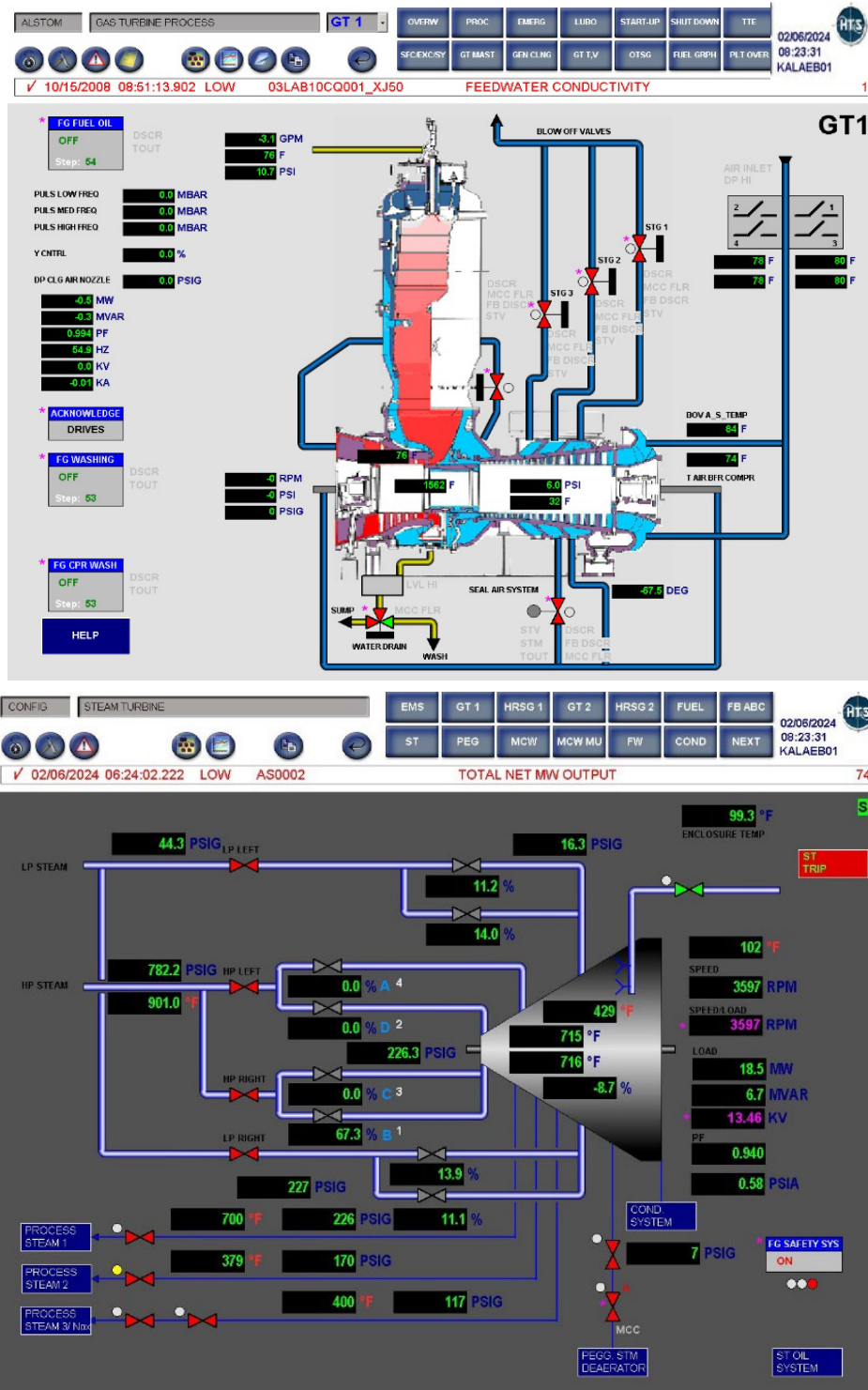
- Open and flexible client/server architecture that provides machine-level and supervisory control of process equipment.
- High speed scanning , alarm and control with moder, ISA 101 High Performance visualization.
- Easily combine iFix, other OT systems plus IT systems , adding information such as PDFs, video, SQL tables, etc. for a better operator experience.
- Scalable: flexible sizing to unlimited points / tags, enterprise visibility, & highly distributed architecture.
- Proficy Historian Essential included in iFix package.
- Leverage over 70 basic drivers with IGS Gateway option.
- Basic drivers (GE9, MBE) are free.
- Some drivers support out-of-the-box network and device redundancy.
- Native high availability option to reduce downtime through SCADA synchronization.

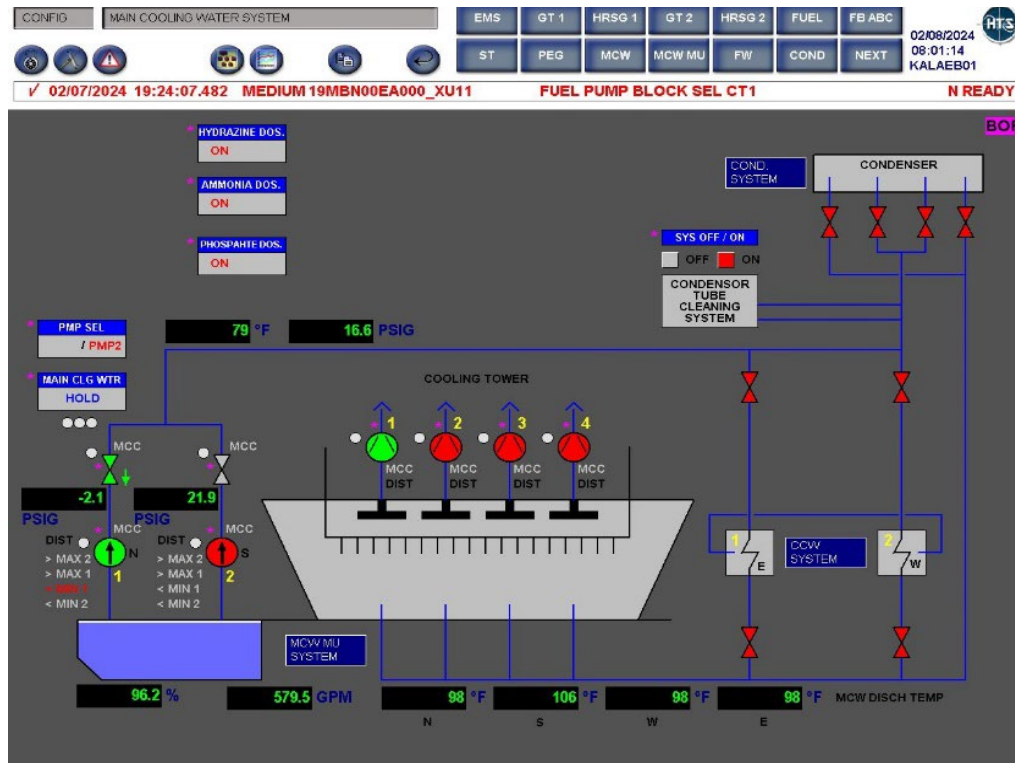
HTS customization:

- Can write new driver if required (IPB gateway, DH02).
- From single HMI station, to complete DCS system:
  - Single station: One computer acts a complete SCADA system (Mount Storm).
  - Complete DCS system (Millbank, Orlando, Kalaeloa)



- Extensive library of dynamo (process objects) for ABB ProControl, GE Fanuc, Allen-Bradley and GE Mark VI control systems. New dynamos can be created if required.
- Standard screen and navigation layout used for all HTS HMI Applications. Can be customized based on customer requests.





- Integrated security:
  - Guests: can see but no operation allowed.
  - Operator: can operate but cannot access configuration or windows OS.
  - Administrator: can operate, can make modifications and access Windows OS.
- Real Time and Historical alarms display
- Real Time and historical time trends display.
- XL Reporter option available to easily create real time and historical reports.